

INSECTICIDE



MANA
Crop Protection

MAKES SENSE.

Diamond[®]

NOVALURON

0.83EC INSECTICIDE



Controls lygus, worms and other foliar insects and protects cotton yields.

Western Cotton

BROAD-SPECTRUM ACTIVITY: Diamond[®] is a broad-spectrum insect growth regulator that exhibits activity against key cotton pests including Lygus (plant bugs) and foliage feeding lepidopterous pests.

EXCELLENT IPM MATERIAL: Safe to beneficial insects, use pattern and unique mode of action reduce potential for environmental and ecological exposure compared to many current standard materials. Diamond is an excellent resistance management tool since it has a unique mode of action versus other plant bug insecticides.

UNIQUE MODE OF ACTION: Diamond is a third generation chitin inhibitor which interferes with the insect's development. While Diamond may temporarily affect some predatory insects by decreasing immature populations, it does not kill adult insects.

RESISTANCE MANAGEMENT: Thanks to its alternative mode of action, Diamond provides an excellent resistance management tool for long lasting cotton protection.

REDUCED RISK TO HUMANS: Excellent mammalian toxicity profile and low use rates compared to current standard materials.

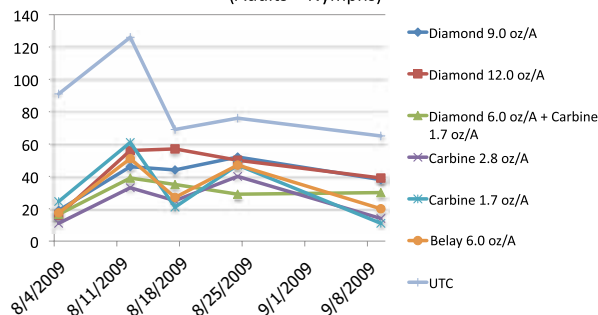


Diamond® delivers cost-effective proven performance.

Diamond provides good residual control and is rainfast in 4 hours. It is not degraded by UV light and remains present on treated foliage for at least 14 days (new growth will need to be treated as Diamond is not systemic). Diamond may be applied alone, in a tank mix, or in rotation with other insecticides. For maximum desired results, use higher water volumes and increased spray pressure to assure that all parts of the crop receive uniform coverage. Drop nozzles may be needed to control pests that develop down in the canopy. Consult the cooperative extension service, professional consultants or other qualified authorities to determine appropriate threshold levels for treatment in your area.

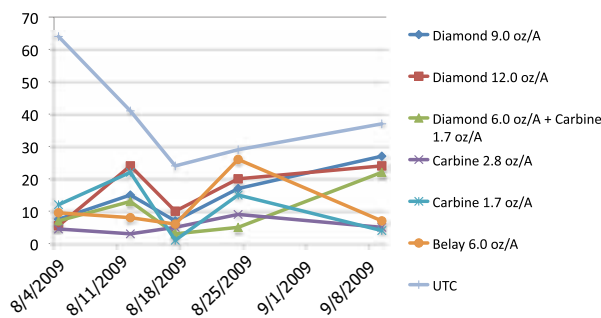
DIAMOND IS AN EXCELLENT TANK MIX PARTNER WHICH HELPS PROTECT COTTON YIELDS.

Number of Lygus/100 Sweeps (Adults + Nymphs)



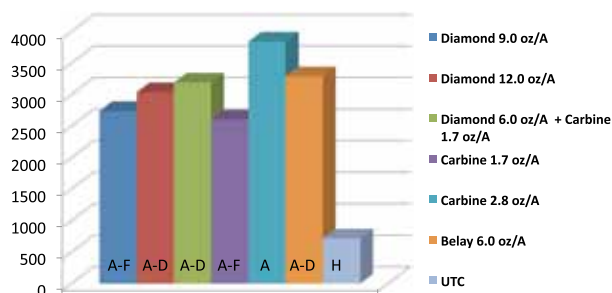
Arizona, 2009 Applications: Diamond, Diamond + Carbine (7/14, 7/29, 8/13, 8/25)
Belay, Carbine, (7/29, 8/13, 8/25)

Number of Lygus Nymphs/100 Sweeps



Arizona, 2009 Applications: Diamond, Diamond + Carbine (7/14, 7/29, 8/13, 8/25)
Belay, Carbine, (7/29, 8/13, 8/25)

Yield - Pounds Seed Cotton/Acre



Arizona, 2009 Applications: Diamond, Diamond + Carbine (7/14, 7/29, 8/13, 8/25)
Belay, Carbine, (7/29, 8/13, 8/25)

TANK MIXTURES:

Diamond insecticide may be tank mixed with other crop protection products used in cotton. Read and follow all manufacturers label recommendations for the companion product.

Diamond is generally compatible with other insecticides, fungicides, fertilizers and micronutrient products. However, the physical compatibility of Diamond with tank-mix partners should be evaluated using a jar test before use.

BROAD SPECTRUM CONTROL

Begin application when plant bugs, stinkbugs or fleahoppers appear and oviposition is initiated. Repeat applications at 7- to 14-day interval as needed to maintain control. Diamond will not control adults. For adult control, tank mix with an adulticide.

For Tobacco budworm and cotton bollworm, start applications when moths start oviposition (most effective as an ovicide) up through the timing when the majority of the eggs are in the blackhead stage and up to 1/8th inch larval length. Use higher rates and higher spray volumes when the larvae are more than 1/4th inch long or if the population is 2X or more above the threshold level or the foliage canopy is tall or dense and larvae are present in the lower part of the canopy. Reapply on larvae 7-14 day interval to protect new growth.

For control of Beet armyworm, Fall armyworm and other foliage feeding caterpillars make the first application at egg hatch or when the first signs of feeding occur. Use the higher rates and higher spray volumes when larvae are more than 1/4 inch long, the target pest population in 2X or more above the state threshold or foliage is tall or dense and larvae are present in the lower part of the canopy. Under heavy infestation or continuous oviposition, re-application on a 7- to 14-day interval will be required to protect new growth.

For suppression of Whitefly and thrips, make applications once adults appear and once oviposition is initiated. Repeat at 14 days if needed. For adult control, tankmix with an adulticide.

QUALITY PRODUCTS. COMPETITIVE PRICES.

MANA makes sense for growers, for channel partners, for agriculture. MANA offers the most comprehensive and diversified portfolio in the crop protection industry with over 60 formulations of insecticides, fungicides, herbicides, PGRs and harvest aids from more than 50 active ingredients. These proven products are efficiently manufactured to the highest standards and value priced to optimize the farm's profitability potential. As the North American arm of the world's seventh largest agrochemical company, MANA provides best-in-class formulations, regulatory capabilities, field research, and a science-based approach to defend and maintain vital active ingredients that other companies have abandoned. Our area business management team throughout the U.S. supports the distributors, retailers, crop consultants and agronomists who are part of the supply chain that farmers and farm managers rely on for localized expertise.



manainc.com

Makhteshim Agan of North America, Inc.
4515 Falls of Neuse Road, Suite 300 • Raleigh, NC 27609

Makhteshim Agan of North America, Inc. • 4515 Falls of Neuse Road, Suite 300 • Raleigh, NC 27609

ALWAYS READ AND FOLLOW LABEL DIRECTIONS. ©2010 Diamond® of MANA (Makhteshim Agan of North America, Inc.). Carbine® of FMC.
FB3978 07/15/10